



# **A BEGINNERS GUIDE ON HOW TO BIND EXTERNAL CORNERS OF ANY ANGLE**

STEP BY STEP INSTUCTIONS

BY KAY HINDMARCH

## INSTRUCTIONS

These instructions will show you how to neatly bind an external corner of any angle.



WE HAVE A STITCH ALONG VIDEO SHOWING HOW TO BIND TOO.

[TAKE ME THERE](#)

## HOW TO CONTACT ME

If you have any questions or queries concerning these instructions, you can contact me directly at this email address [kayscutz@gmail.com](mailto:kayscutz@gmail.com). You will get a quicker response rather than going through Kreative Kiwi who would forward it on to me. I will respond as quickly as possible during the following hours. Monday to Friday 9AM to 5PM CET+1 excluding weekends and bank holidays.

Copyright 2020. Kay's Cutz holds the copyright for these instructions in its entirety, including any written content, video, all graphics, photos and images used in the creation of its various elements. These instructions are uniquely available through Kreative Kiwi. This digitized design is protected under International copyright laws. This embroidery design and all files associated with it cannot be sold, duplicated or shared in any way shape or form. They can be used by the original purchaser/user only. You may not copy, lend, give or sell the files to anyone else ever. You may not change, add to, delete parts of, or alter the files and then call them your own this includes any designs given free of charge, to do so is theft. You may share a link to the design so that someone else can buy or download a free design for themselves from Kreative Kiwi's website.

Licensed use – You may use these instructions for your own projects. You cannot share them with other people as they form part of the instructions for this design.



### STEP 1

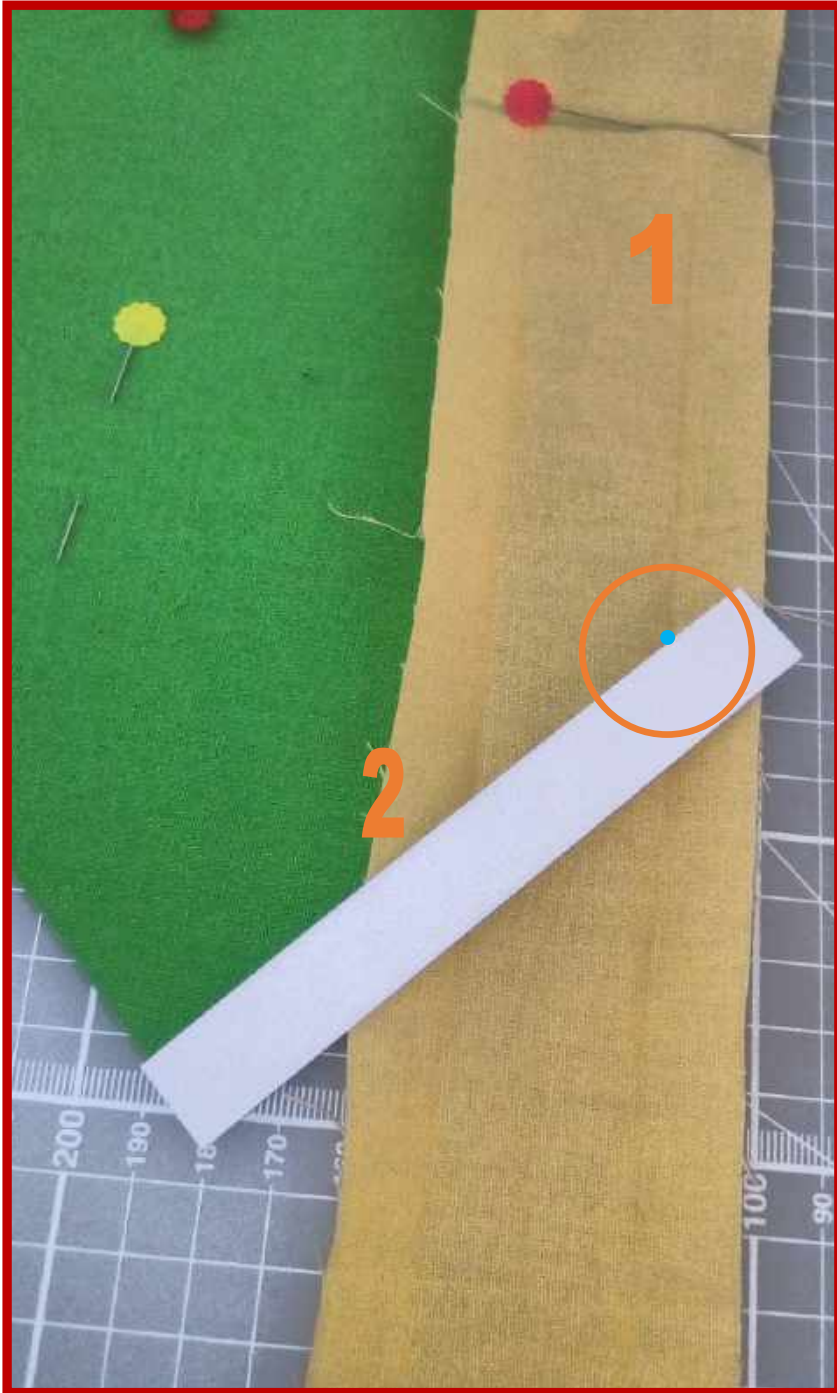
- Decide how wide you want your binding
- Cut a piece of card about 150 MM or 6" long by a quarter of the width of your binding so if your binding is going to be 1/2" wide you cut your binding fabric 2-1/4" wide and your card to 1/2" wide. The extra 1/4" is to take into account the thickness of your fabric.
- The edges are numbers and will be worked in numerical order.

Note— Every corner is worked in the same way, so once you get the hang of folding and attaching your binding you will be able to do everything at your machine. This will make adding bias binding to your project much quicker.



## STEP 2

- Decide where you would like your ends to join
- Lay your binding face down along on the 1st edge of your project, raw edge to raw edge and pin it where you want the join to end up.
- Making sure my binding fabric is taught I have used a chalk pen to mark off the first corner of my pennant marked by blue dot in the centre of the orange circle. You don't have to mark this off it is purely so that you can see what I am doing.



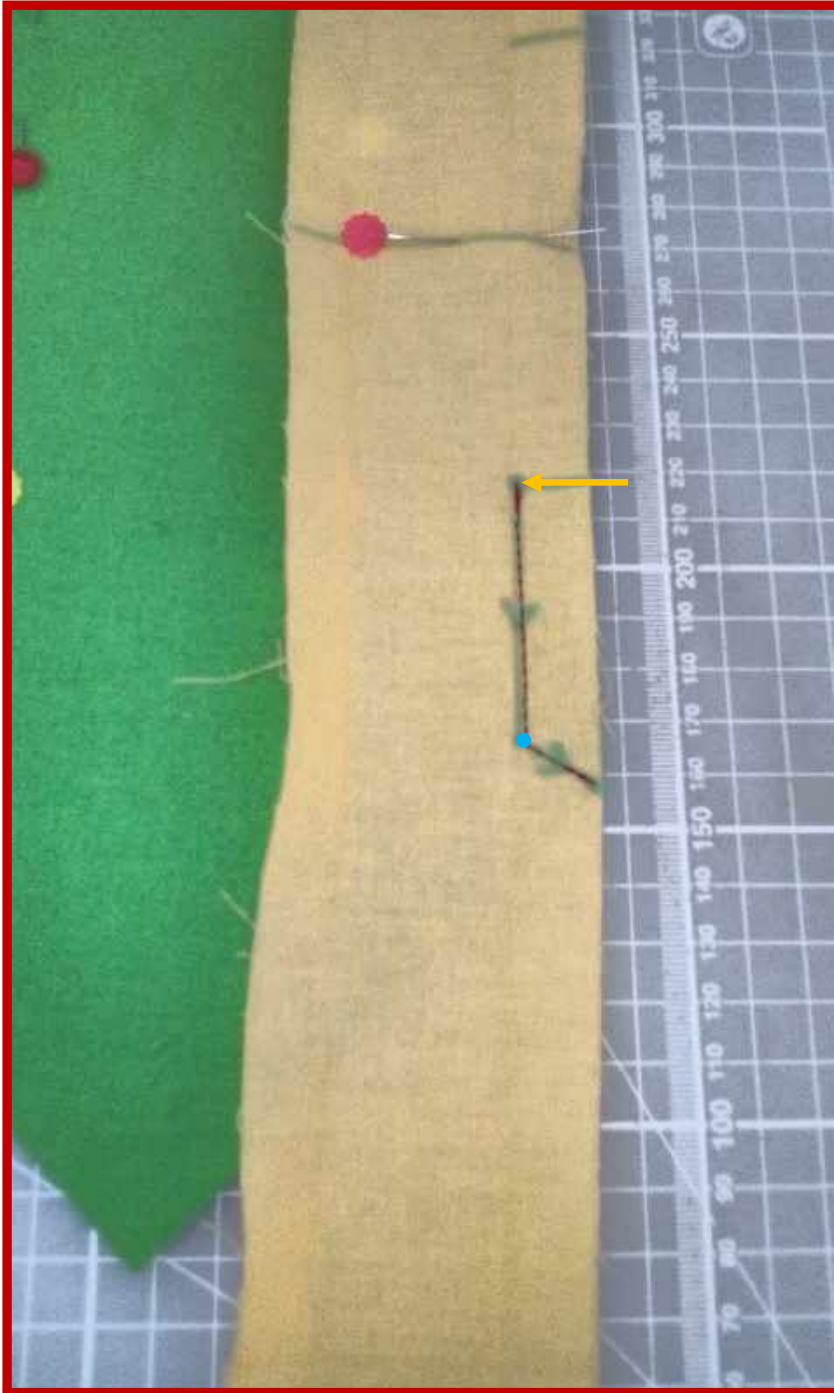
### STEP 3

- Place your piece of card along edge 2 with the edge of your card flush with the edge of your project.
- Using a chalk pen or similar make a mark where the edge of the card meets the righthand crease of your binding, as shown by the blue dot in the centre of the orange circle.



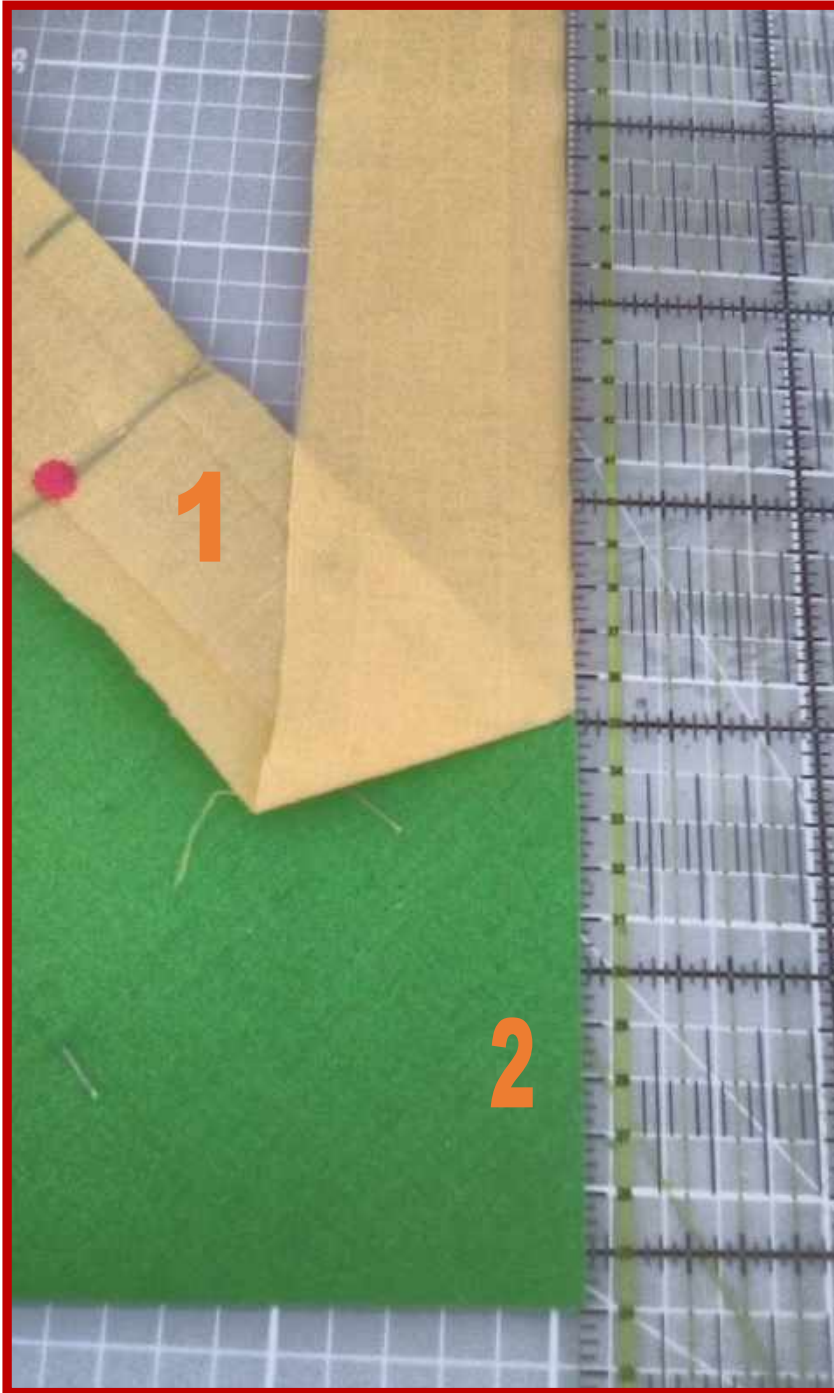
#### STEP 4

- Going from the dot you made on the crease to your 1st corner draw a line with a chalk pen or other suitable fabric marker.



### STEP 5

- You need to leave a good 6" gap to join your binding so mark of three inches each side of your pin
- You are going to stitch from the bottom gap marker shown by the yellow arrow, down the crease and off at the angle you marked off to the tip of your first corner as shown by the stitch line with arrows.



### STEP 6

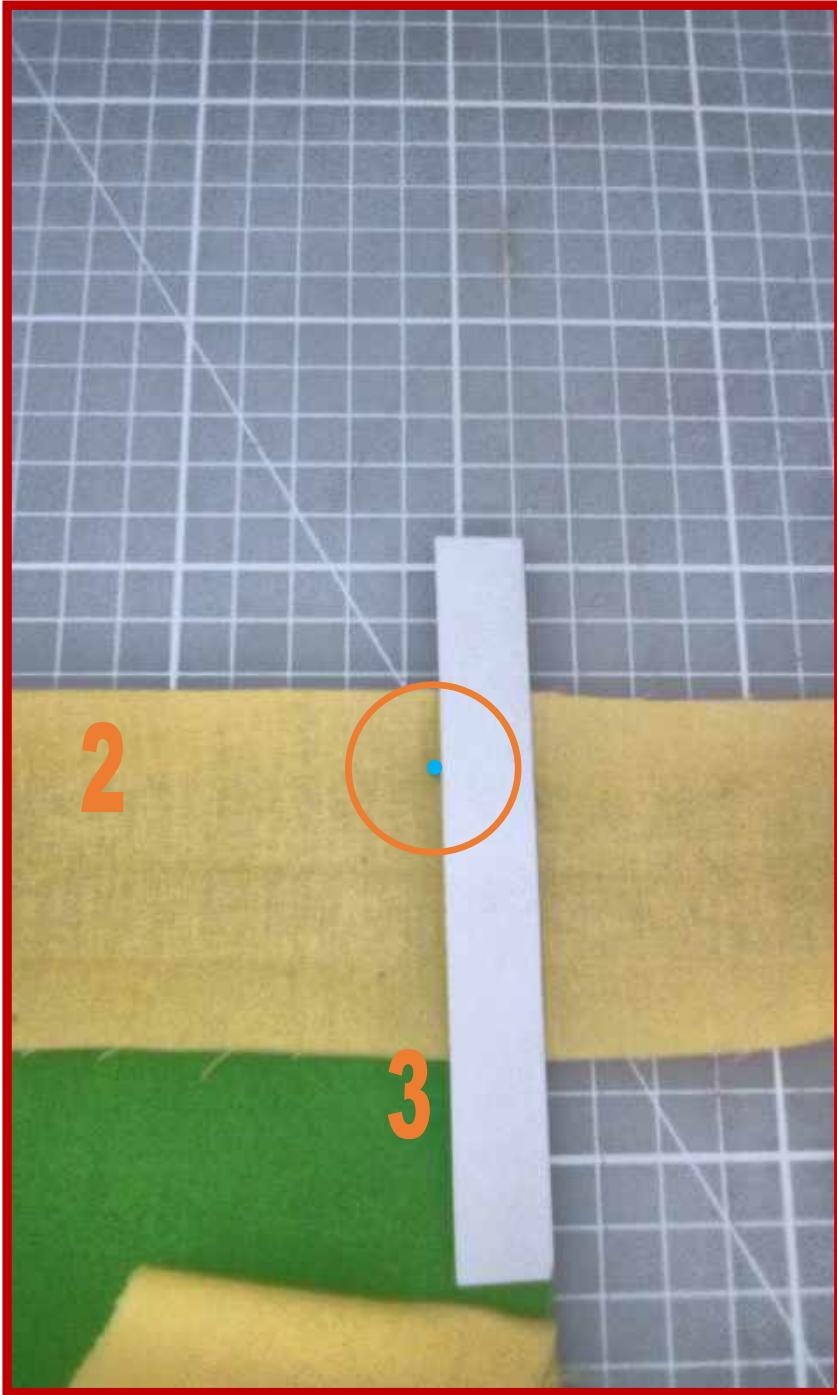
- Turn your project so that raw edge 2 lays vertically.
- Pull your binding strip up vertically so that it forms a straight line with the unbound edge. You don't need to use a ruler I am using it so that you can see how the binding strip should be in relation to the raw edge.
- Finger press the fold so that it forms a nice sharp crease.





### STEP 7

- Pull your binding strip down vertically so the raw edge of your binding strip lays flush against the raw edge of the unbound edge.
- Finger press the top fold so that it forms a nice sharp crease. I have put a pin into hold it in place, you don't need to use a pin if you don't want to.
- I made sure that my fabric strip is taught and I marked off the bottom corner of edge 2. You don't have to mark this off it is purely so that you can see what I am doing.



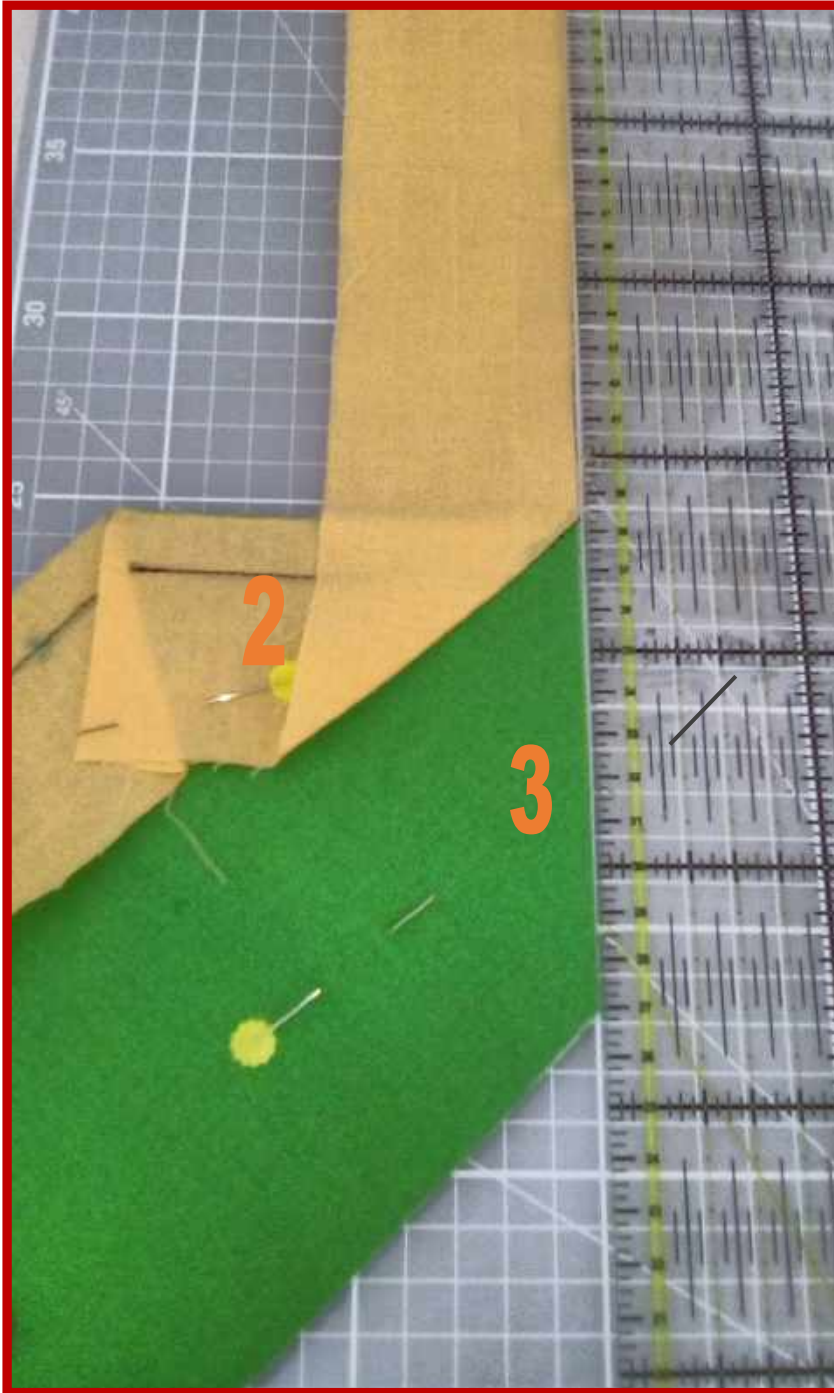
### STEP 8

- I turned my work so that edge 3 is laying vertically so that you can see clearly. Align your piece of card against raw edge 3 of your project.
- Using a chalk pen or similar make a mark where the edge of the card meets the 1st crease of your binding as shown by the blue dot in the centre of the orange circle. This is where you will turn to come off at the point of the corner.



### STEP 9

- I turned my work back again.
- Starting from the very edge of side 1, stitch down the crease and turn at your mark and come off at the point of the 2nd corner as shown by the stitched lines with the arrows.



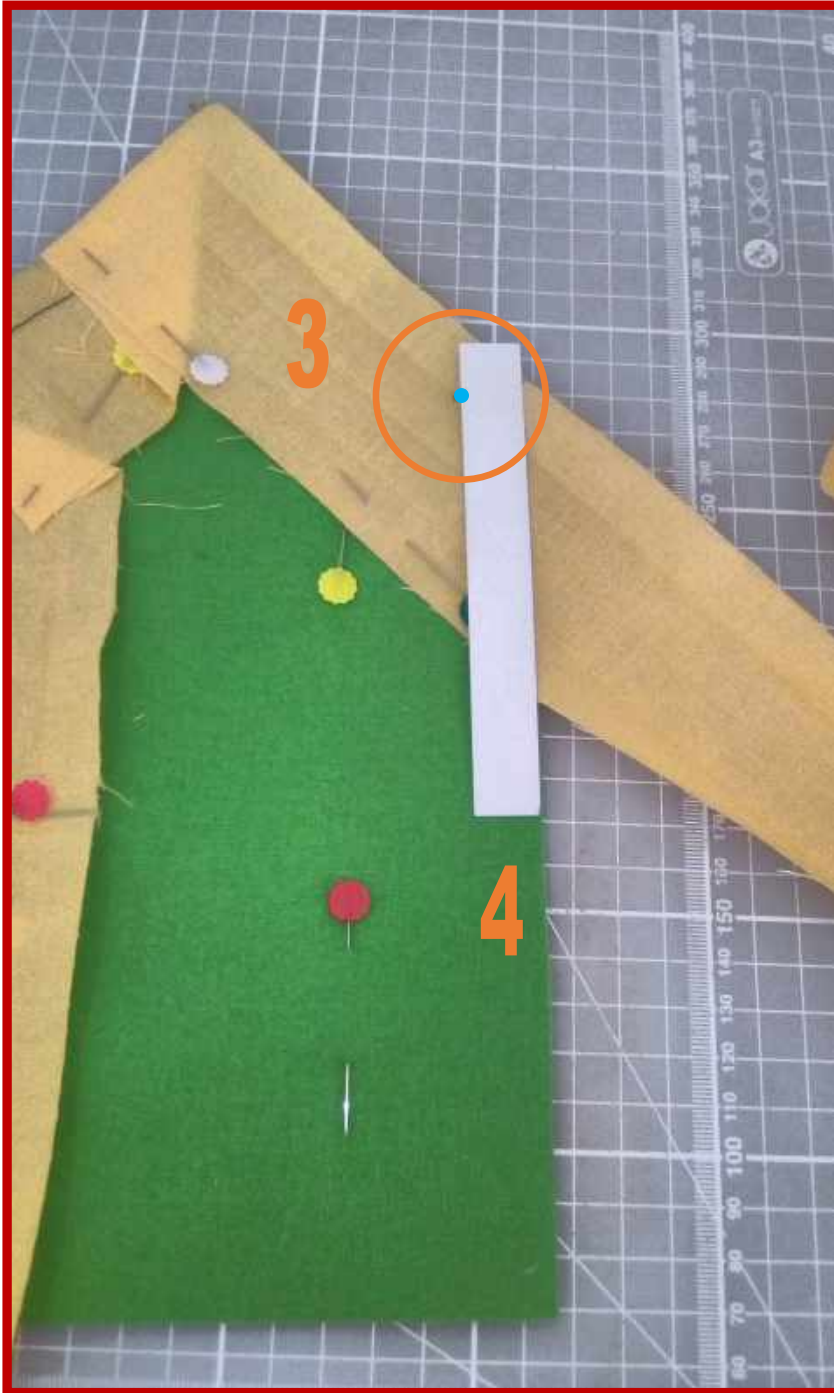
#### STEP 10

- Turn your project so the 3rd raw edge lays vertically.
- Pull your binding strip up vertically so that it forms a straight line with the unbound edge. You don't need to use a ruler I am using it so that you can see how the binding strip should be in relation to the raw edge.
- Finger press the fold so that it forms a nice sharp crease.



### STEP 11

- Pull your binding strip down vertically so the raw edge lays up against the raw edge of the unbound edge.
- Finger press the fold at the top so that it forms a nice sharp crease level with edge 2. I have put a pin into hold it in place, you don't need to use a pin if you don't want to.
- I made sure that my fabric strip is taught and I marked off the bottom corner of edge 3 shown by the blue dot in the orange circle. You don't have to mark this off it is purely so that you can see what I am doing.



## STEP 12

- I turned my work so that you can see clearly. Align your piece of card against raw edge 4 of your project.
- Using a chalk pen or similar make a mark where the edge of the card meets the 1st crease of your binding as shown by the blue dot in the centre of the orange circle. This is where you will turn to come off at the point of the corner.



### STEP 13

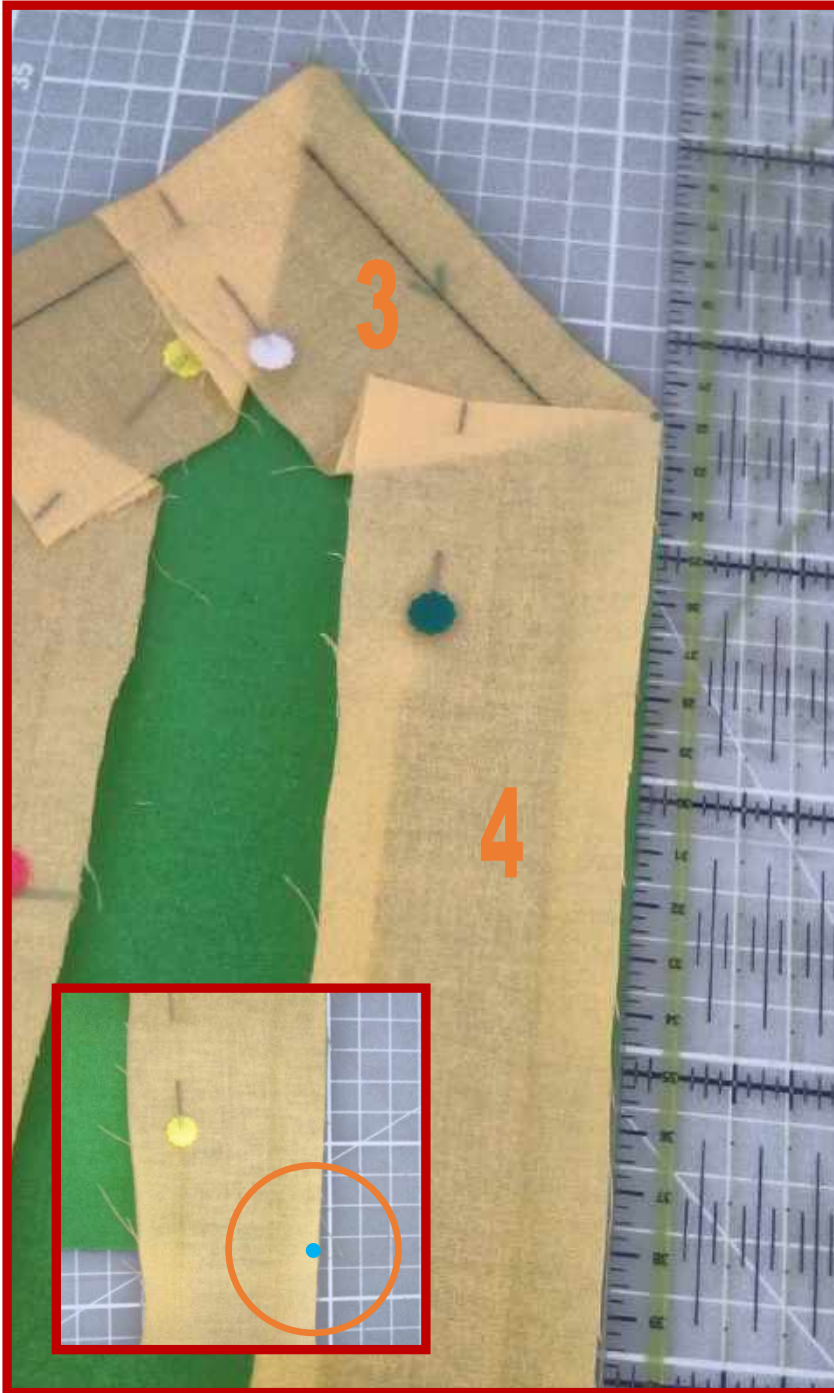
- I have turned my work back again so that edge 3 lays vertically.
- Starting from the very edge of side 2, stitch down the crease and turn at your mark and come off at the point of the 3rd corner as shown by the stitched line with the arrows.



#### STEP 14

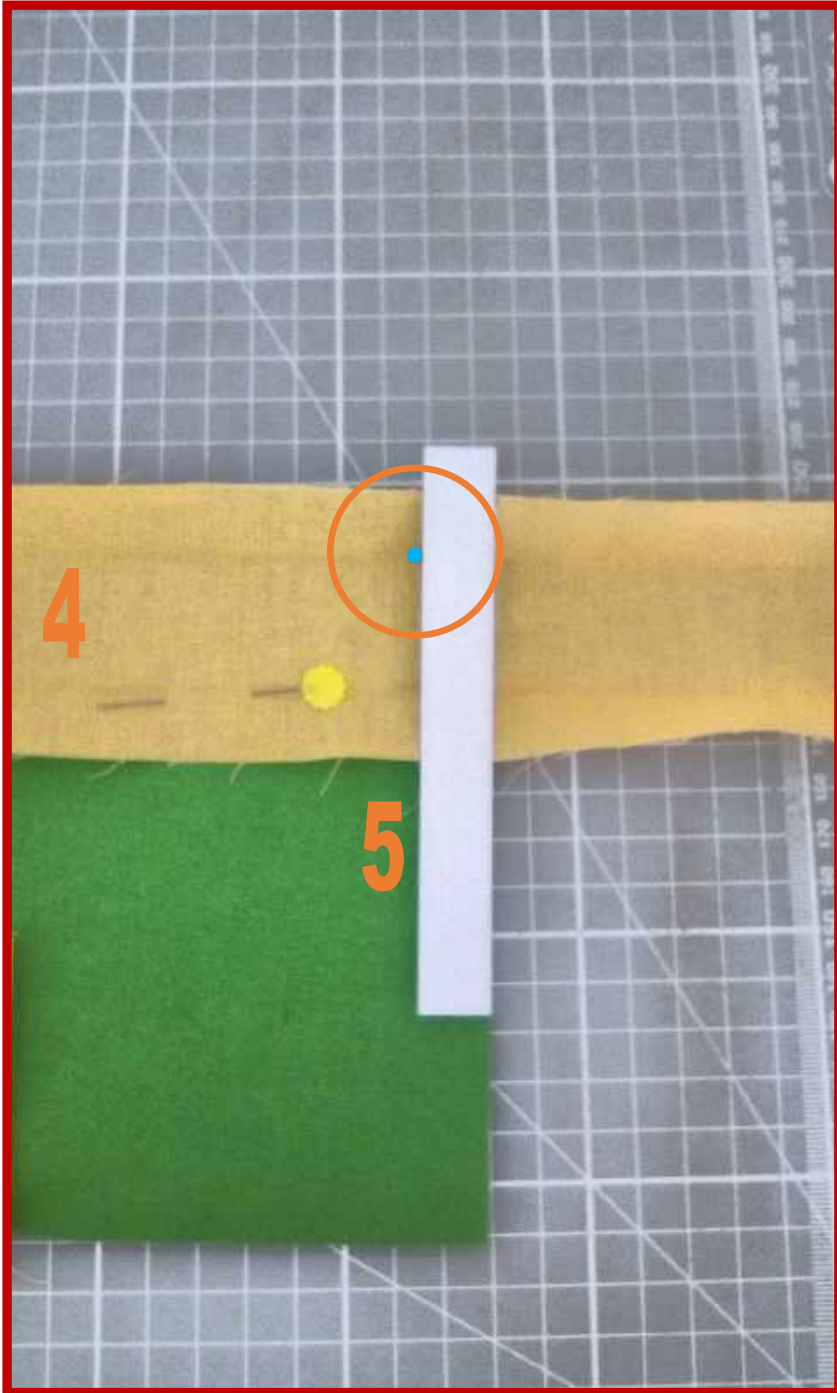
- Turn your project so the 4th raw edge lays vertically.
- Pull your binding strip up vertically so that it forms a straight line with the unbound edge. You don't need to use a ruler. I am using it so that you can see how the binding strip should be in relation to the raw edge.
- Finger press the fold so that it forms a nice sharp crease.





### STEP 15

- Pull your binding strip down vertically so the raw edge lays up against the raw edge of the unbound edge.
- Finger press the fold at the top so that it forms a nice sharp crease. I have put a pin into hold it in place, you don't need to use a pin if you don't want to.
- I made sure that my fabric strip is taught and I marked off the bottom corner of edge 4 shown by the blue dot in the orange circle.



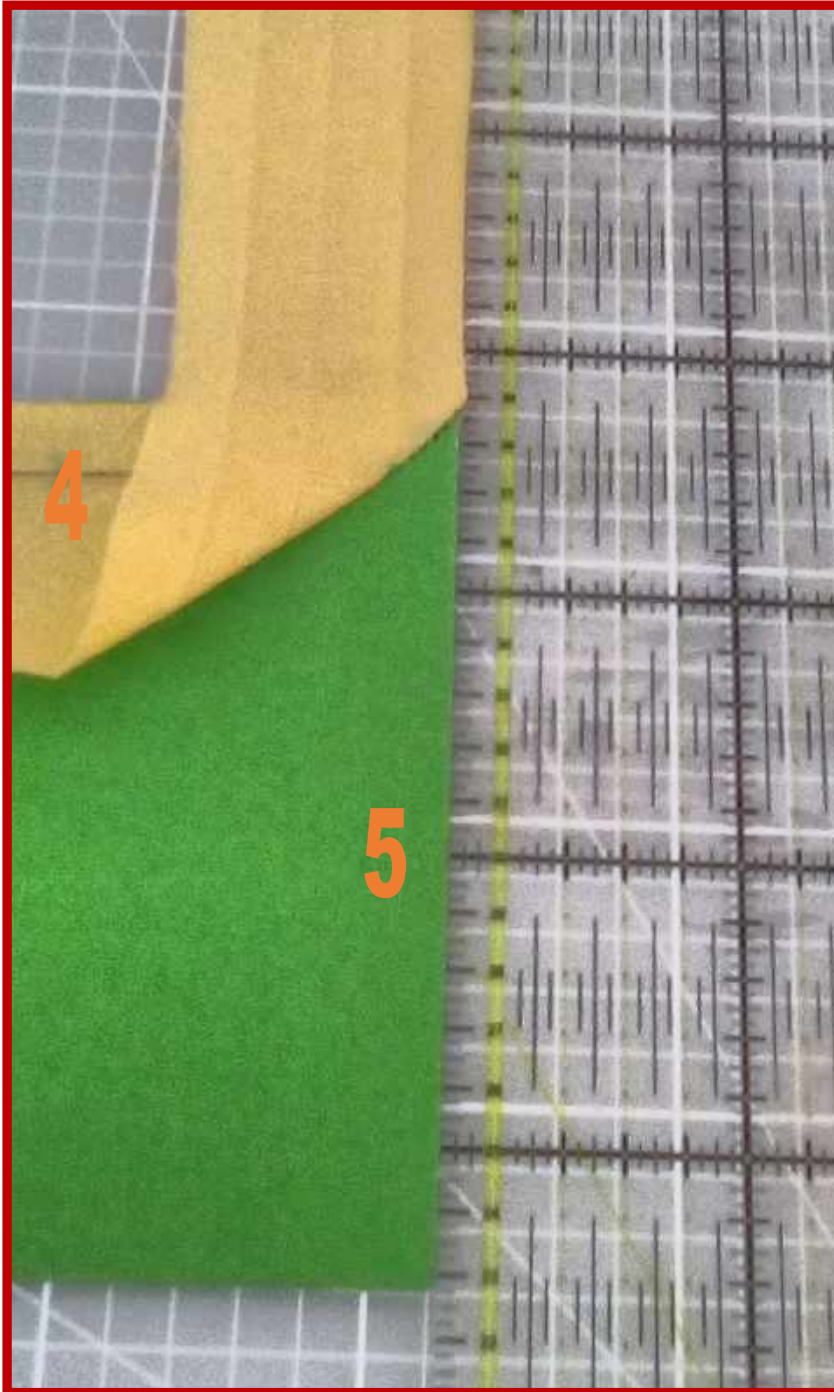
#### STEP 16

- I turned my work so that edge 5 is laying vertically so that you can see clearly. Align your piece of card against raw edge 5 of your project.
- Using a chalk pen or similar make a mark where the edge of the card meets the 1st crease of your binding as shown by the blue dot in the centre of the orange circle. This is where you will turn to come off at the point of the corner.



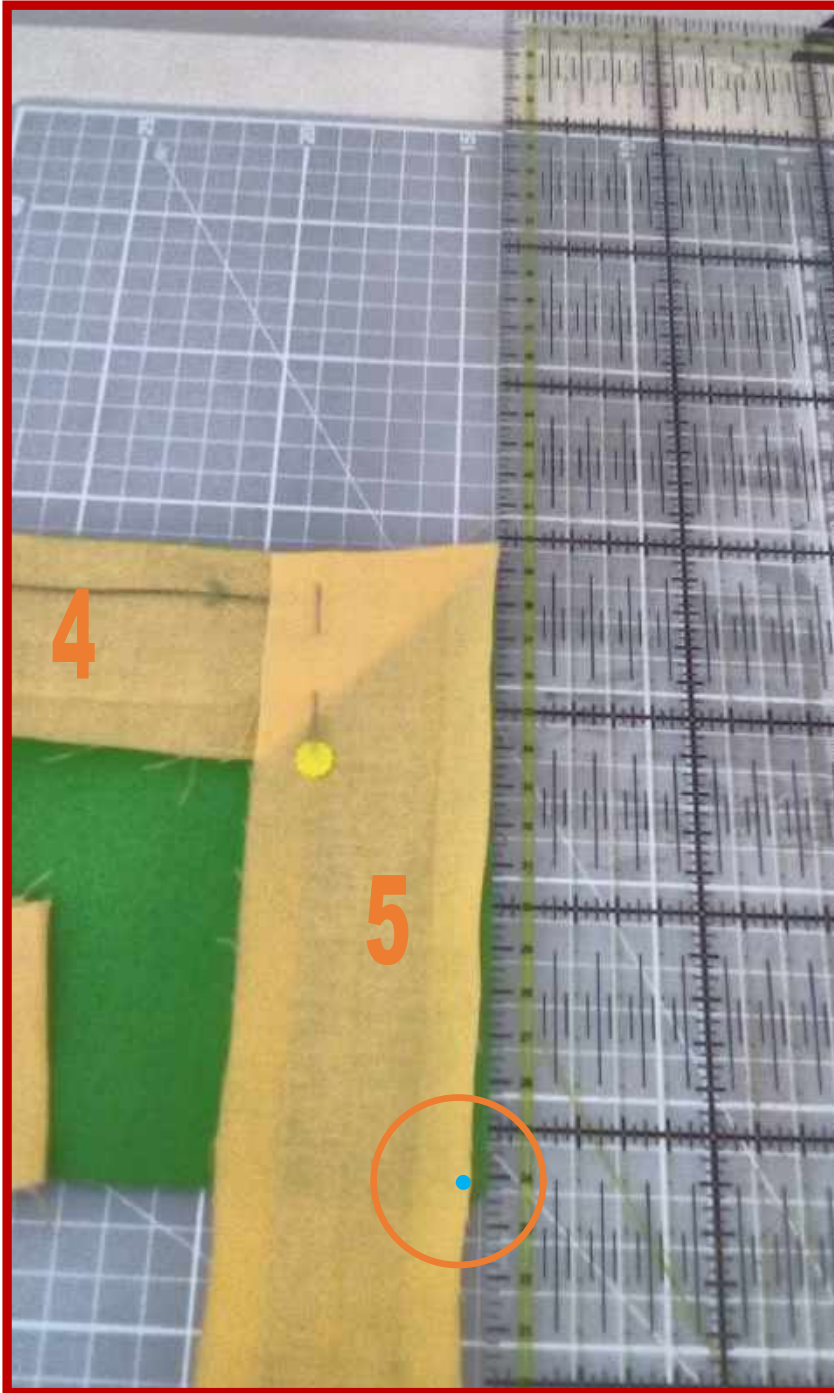
### STEP 17

- Starting from the very edge of side 3, stitch down the crease and turn at your mark and come off at the point of the 4th corner as shown by the stitched line with the arrows.



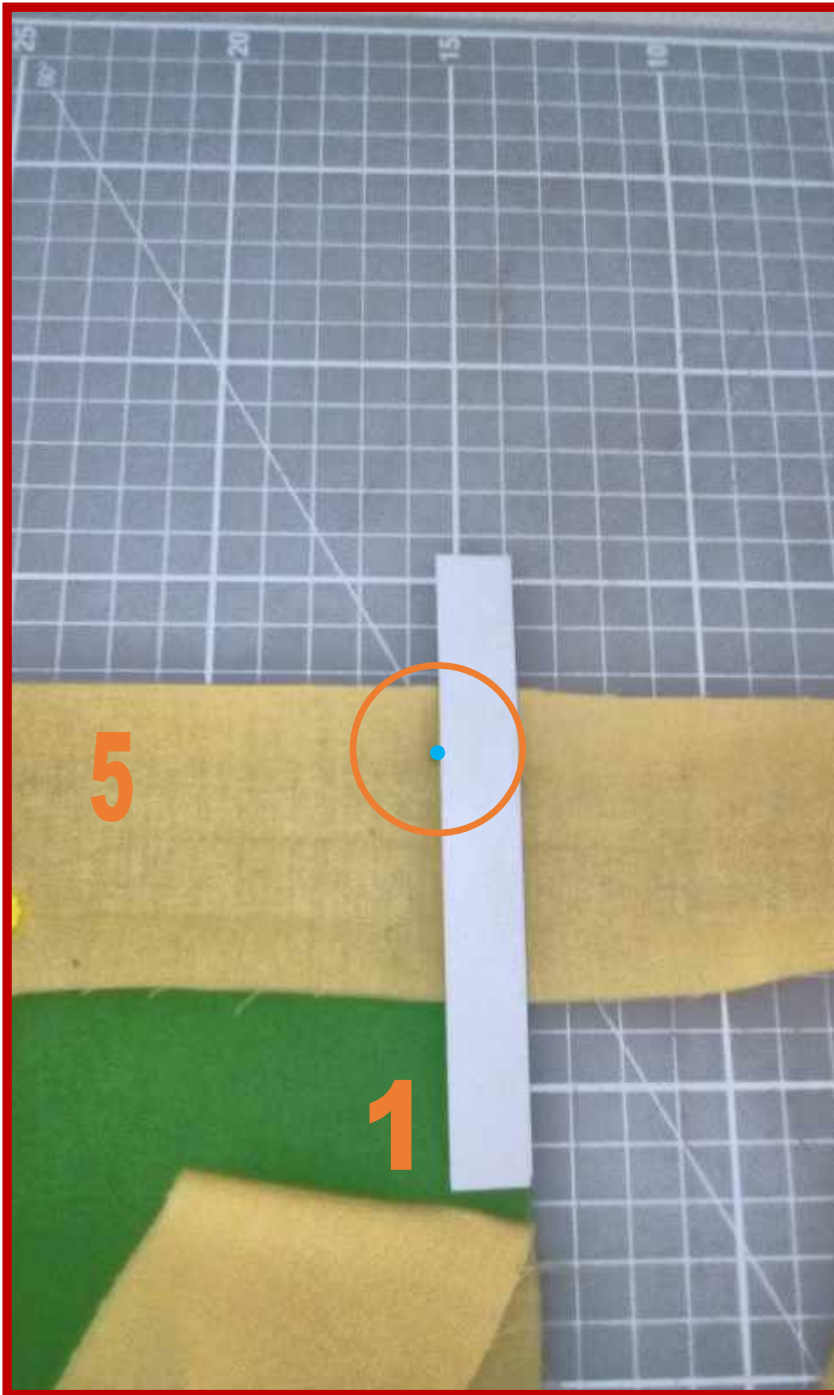
#### STEP 18

- Turn your project so the 5th raw edge lays vertically.
- Pull your binding strip up vertically so that it forms a straight line with the unbound edge. You don't need to use a ruler I am using it so that you can see how the binding strip should be in relation to the raw edge.
- Finger press the fold so that it forms a nice sharp crease.



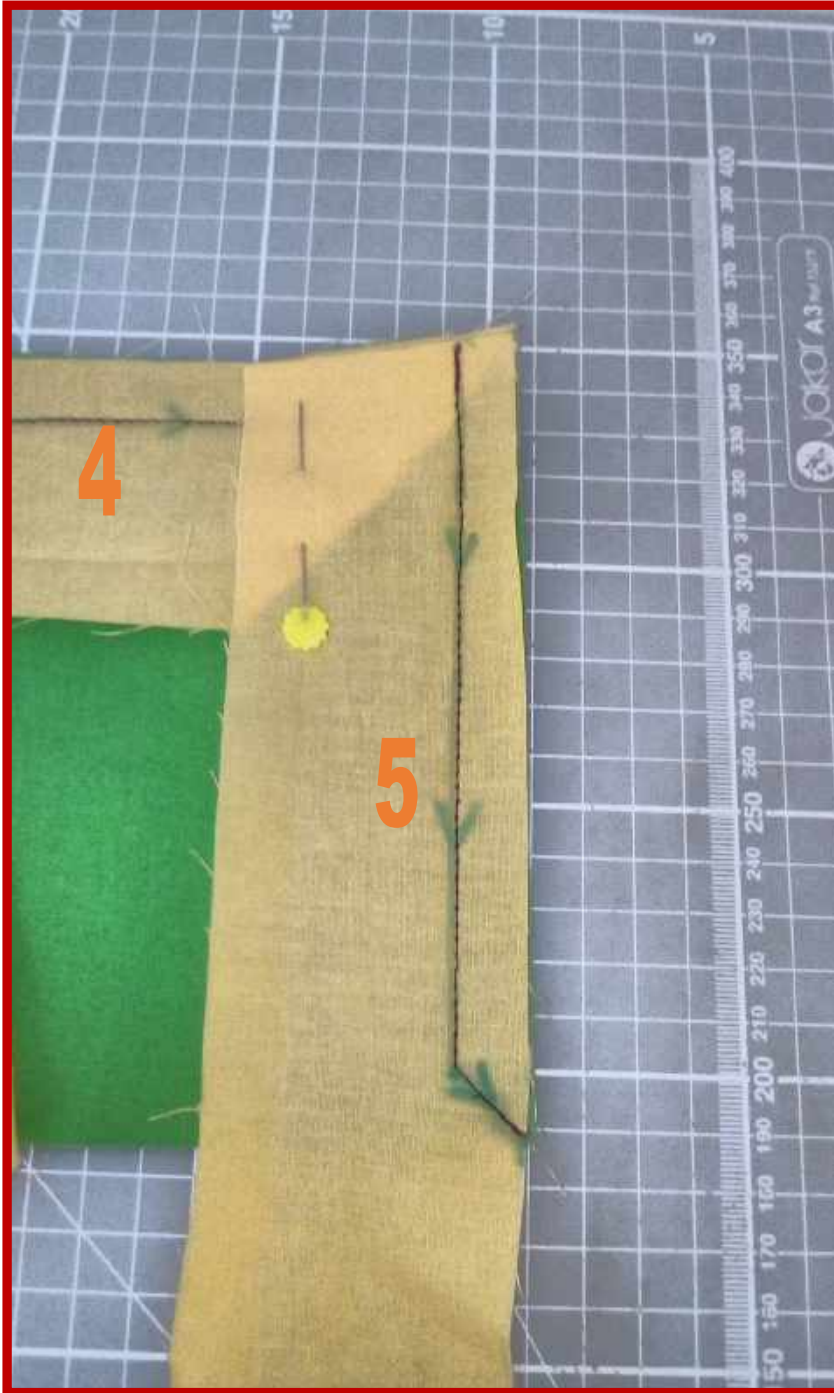
### STEP 19

- Pull your binding strip down vertically so the raw edge lays up against the raw edge of the unbound edge.
- Finger press the fold at the top so that it forms a nice sharp crease. I have put a pin into hold it in place, you don't need to use a pin if you don't want to.
- I made sure that my fabric strip is taught and I marked off the bottom corner of edge 5 as shown by the blue dot in the centre of the orange circle



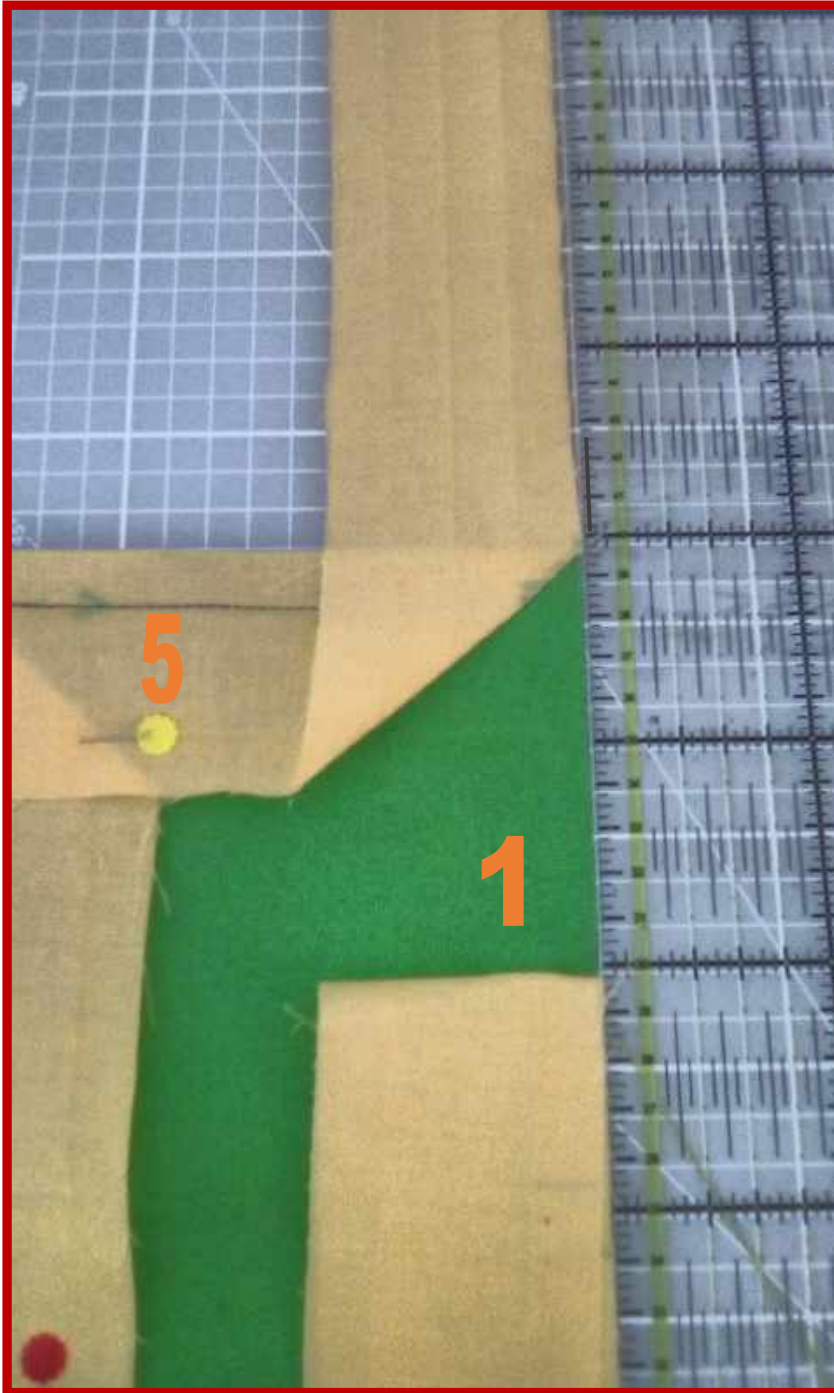
## STEP 20

- I turned my work so that edge 1 is laying vertically so that you can see clearly. Align your piece of card against raw edge 1 of your project.
- Using a chalk pen or similar make a mark where the edge of the card meets the 1st crease of your binding as shown by the blue dot in the centre of the orange circle. This is where you will turn to come off at the point of the corner.



### STEP 21

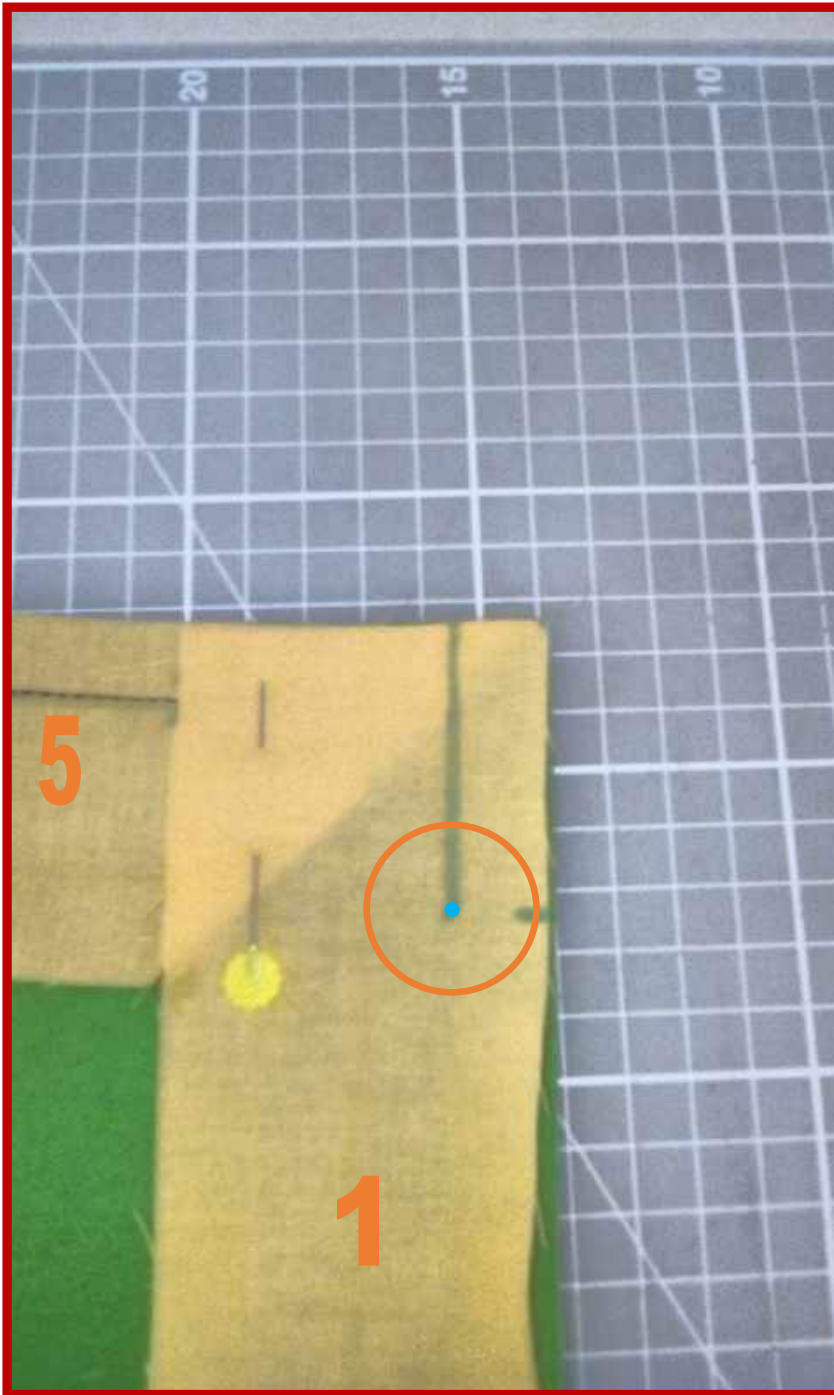
- I turned my work so that side 5 is laying vertically again.
- Starting from the very edge of side 4, stitch down the crease and turn at your mark and come off at the point of the 5th corner as shown by the stitched line with the arrows.



## STEP 22

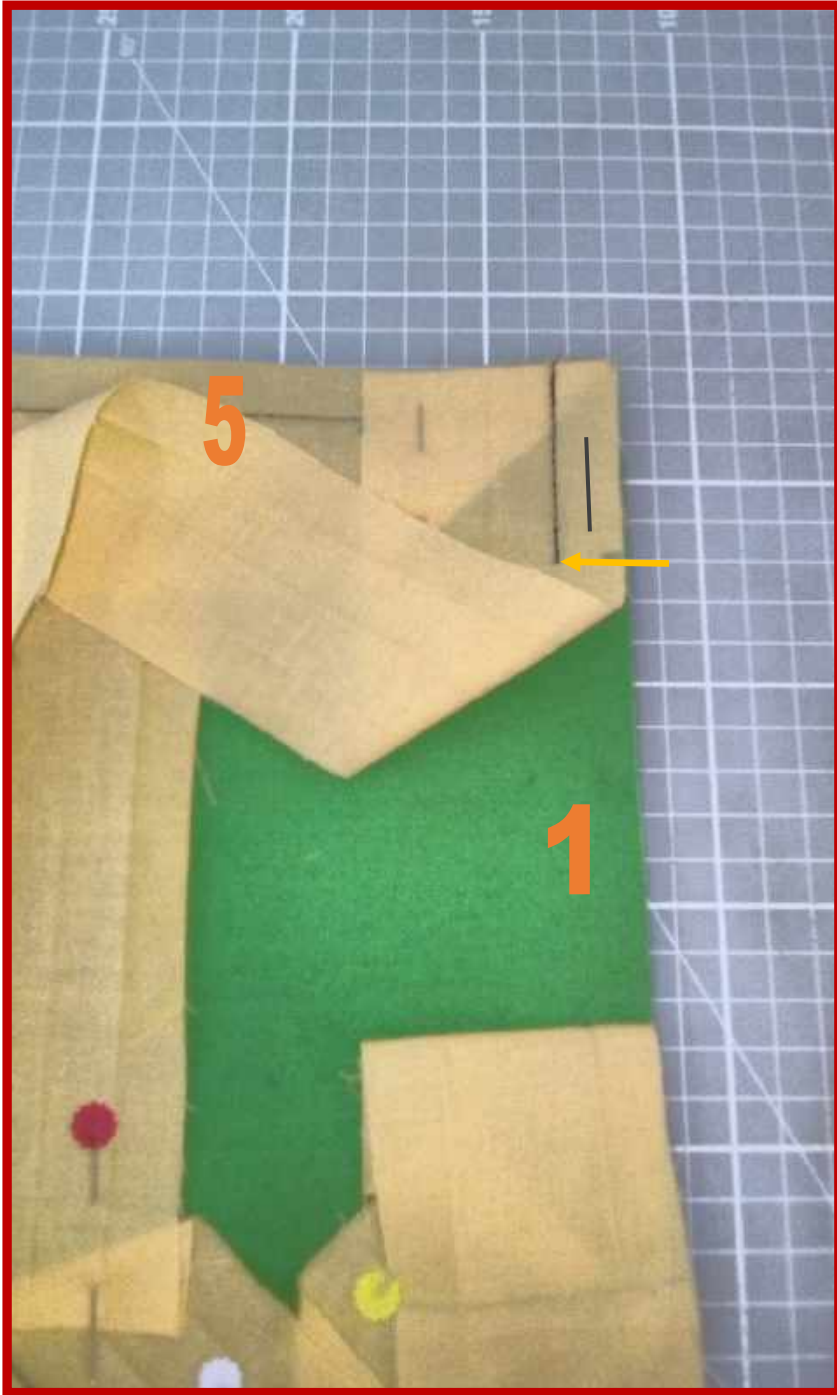
- Turn your project so the 1st raw edge lays vertically.
- Pull your binding strip up vertically so that it forms a straight line with the unbound edge. You don't need to use a ruler I am using it so that you can see how the binding strip should be in relation to the raw edge.
- Finger press the fold so that it forms a nice sharp crease.





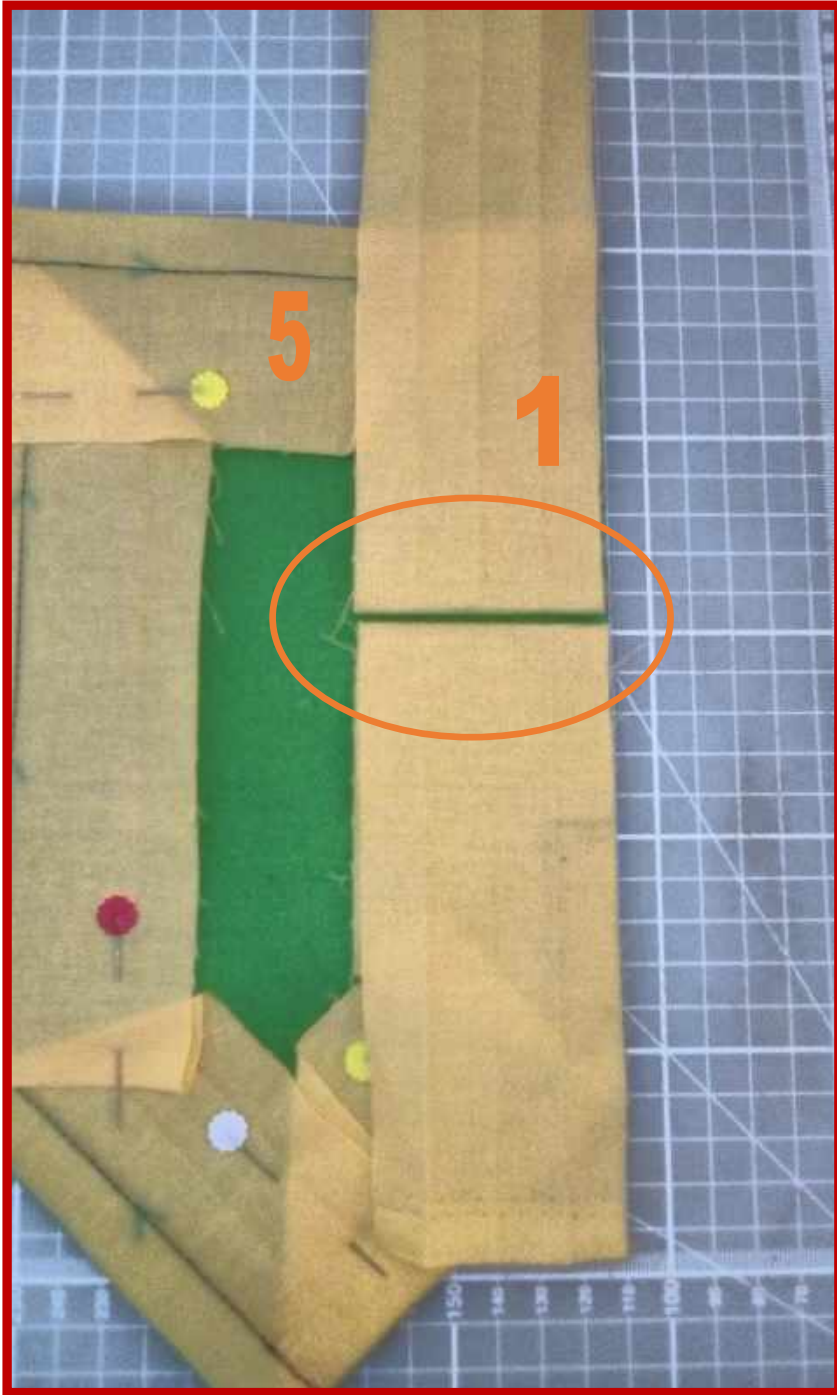
### STEP 23

- Pull your binding strip down vertically so the raw edge lays up against the raw edge of the unbound edge.
- Finger press the fold at the top so that it forms a nice sharp crease. I have put a pin into hold it in place, you don't need to use a pin if you don't want to.
- I made sure that my fabric strip is taught and I marked off 5cm or 2" as shown by the blue dot in the centre of the orange circle.



#### STEP 24

- Starting from the very edge of side 5, stitch down the crease of edge 1 for 5 CM or 2", then back tack to secure the end. The yellow arrow shows where I stopped.



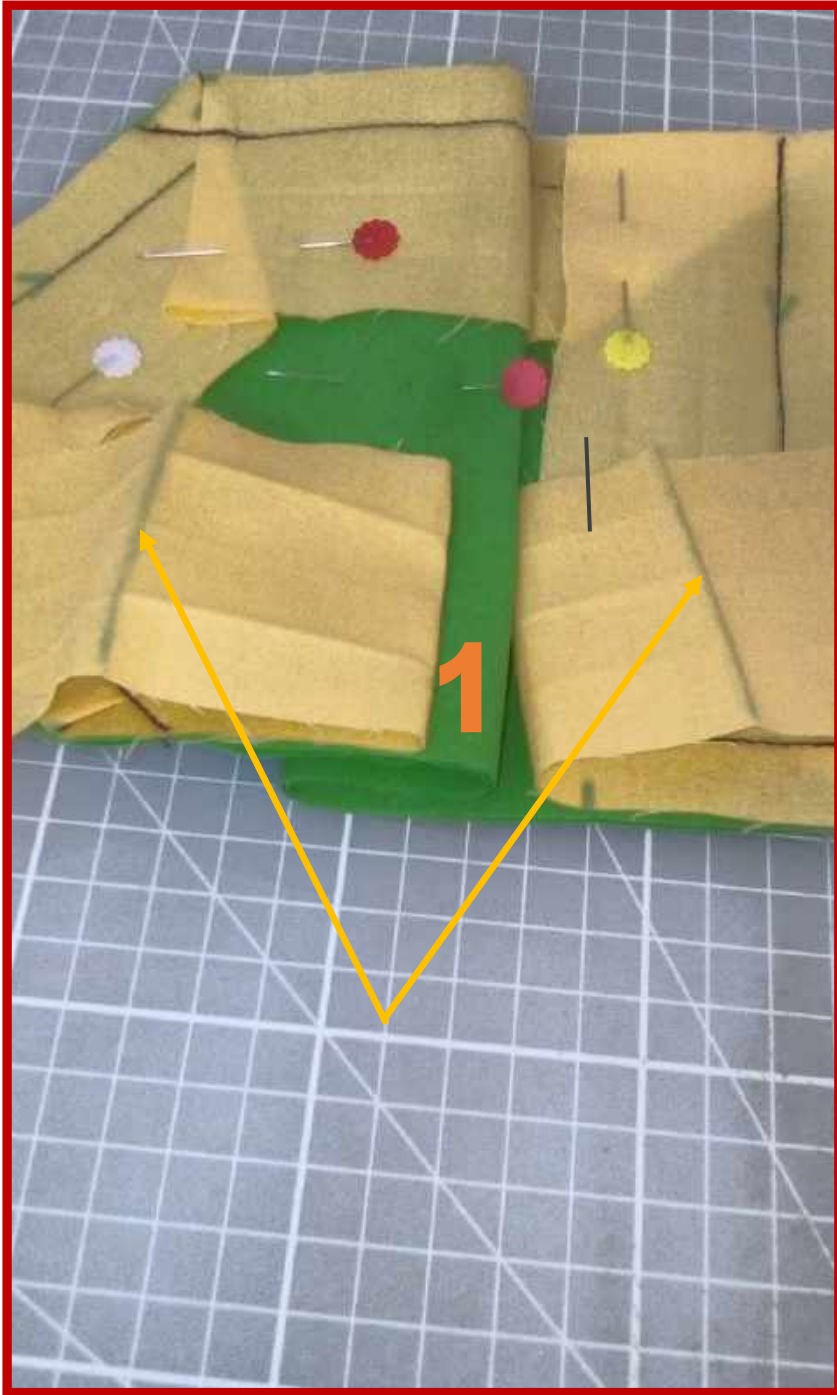
#### STEP 25

- Lay both tails flush with edge 1 and fold them both back leaving a small gap of about 2 MM or 1/8" as shown by the orange oval. This will ensure that when you join the two pieces that there isn't any excess gaping.



### STEP 26

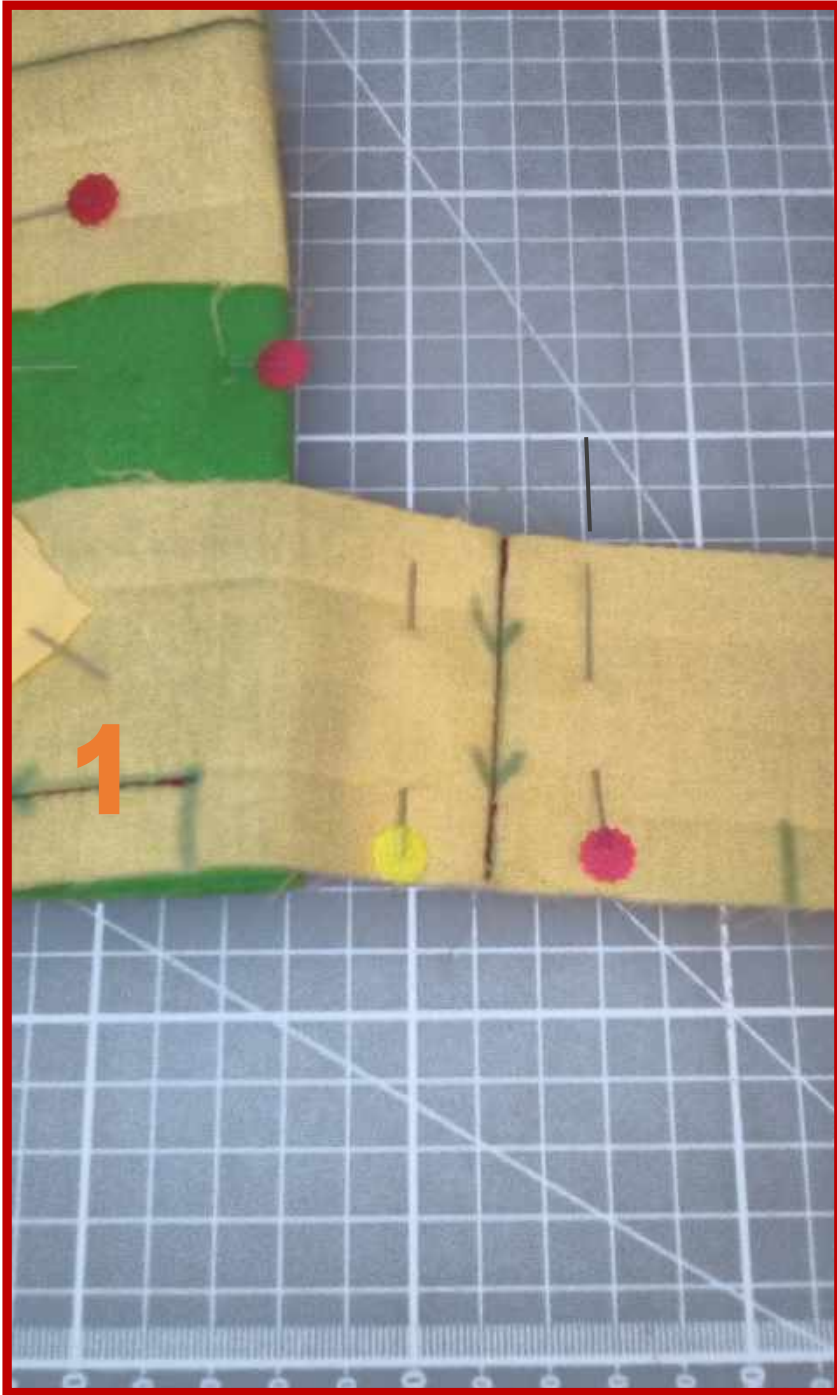
- Mark along the two creases, this will be your stitch line when you join the two tails together. I mark mine on both sides so that it is easy to see when I line them up.



## STEP 27

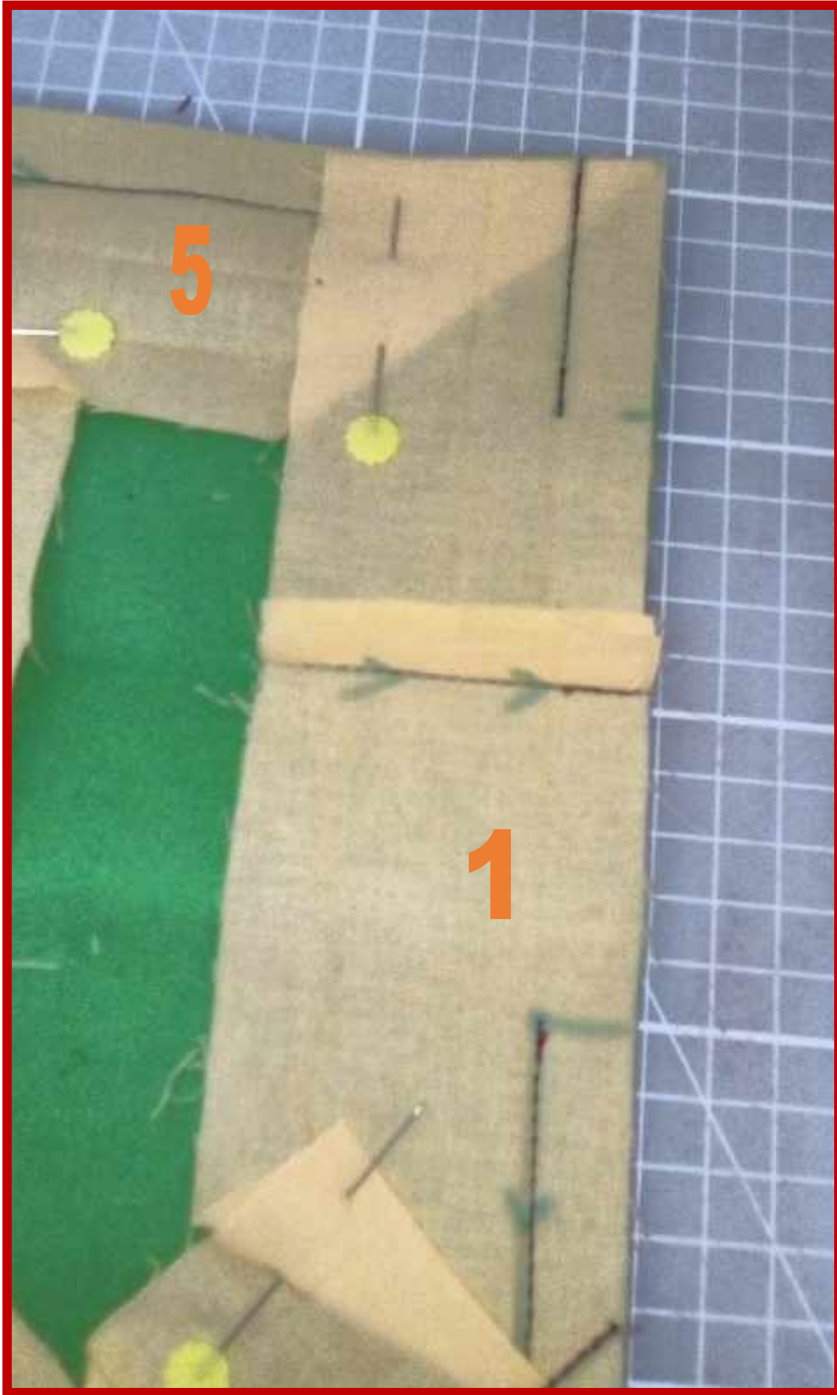
### PHOTO VIEW OF THE SIDE OF SIDE 1

- Accordion fold your work to create some slack between the two folded tail ends and pin your work to hold it in place. The two lines marked by the yellow arrows need to line up with each other.



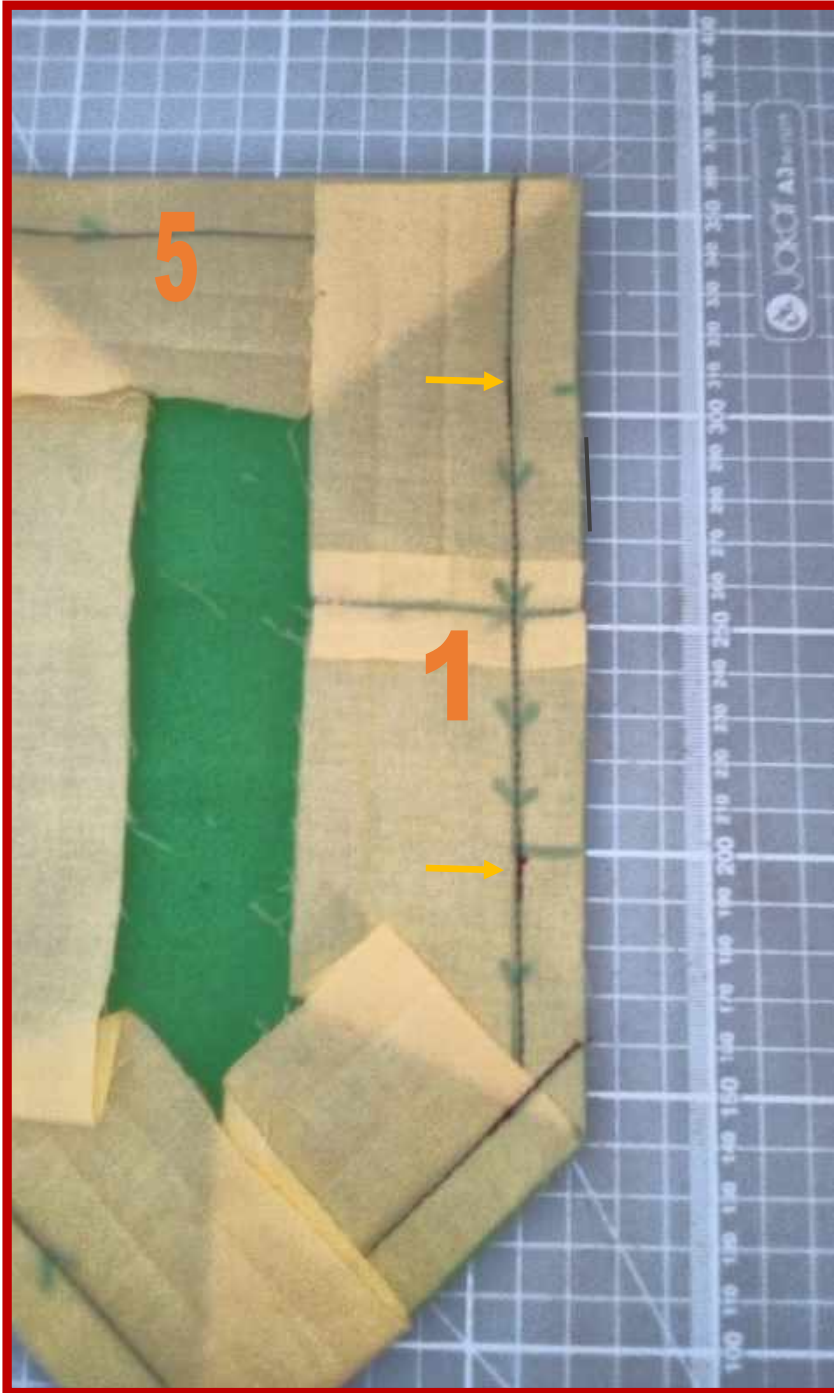
### STEP 28

- Line up the two line marks of the tails, right sides together, then put a pin each side of the line to hold them in place while you stitch them together
- Stitch along the marked line to join them together as show by the stitched line with the arrows.



STEP 29

Trim the tails down leaving a 6 MM or 1/4" seam allowance.

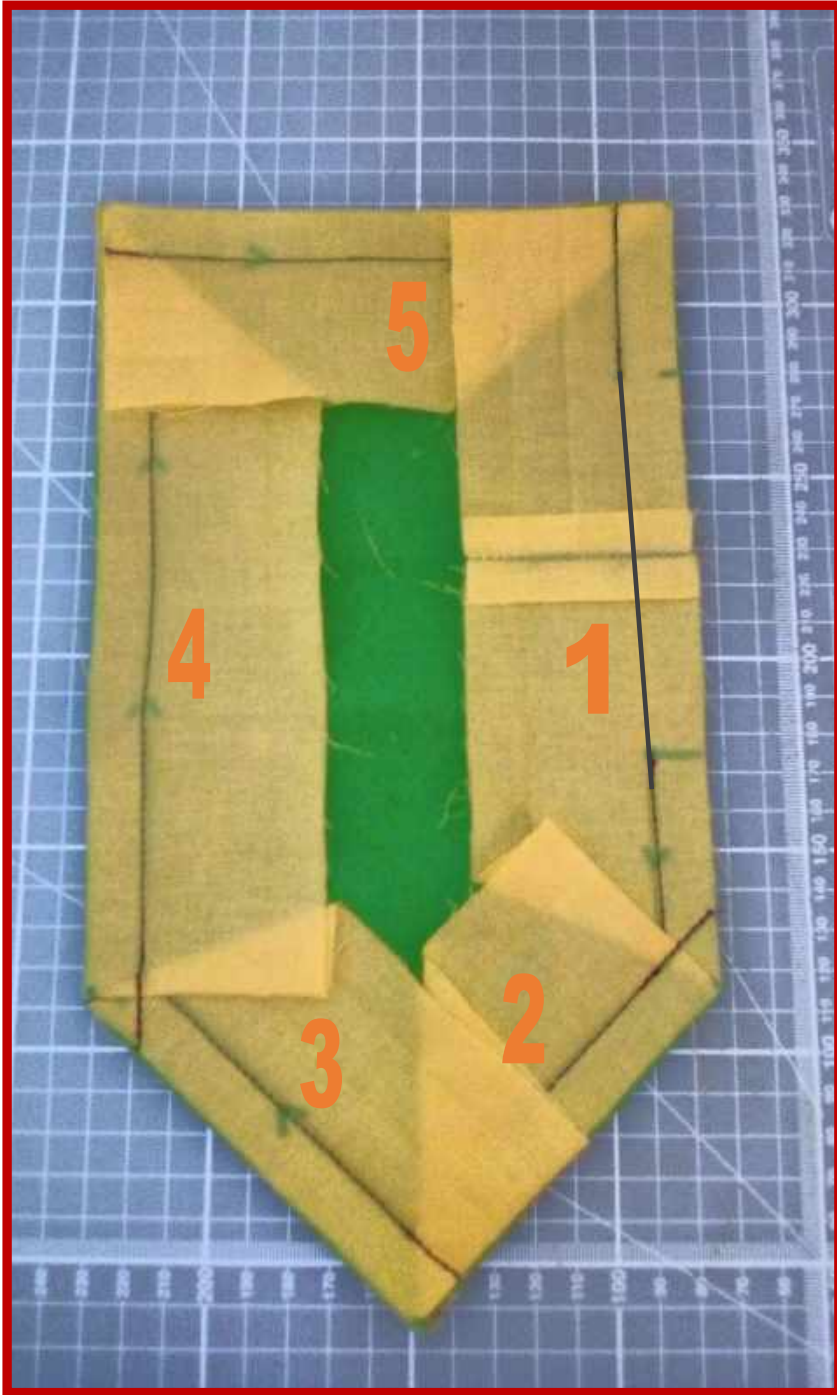


### STEP 30

#### PHOTO VIEW FROM THE FRONT

- Starting just before where you stopped your last stitch line, anchor your thread and stitch along the first crease line to close the remaining gap as shown between by the two yellow arrows, then back tack to secure the end.





### STEP 31

#### PHOTO VIEW FROM THE FRONT

- Your binding on the front of your work should now look like this.



## STEP 32

### PHOTO VIEW FROM THE FRONT

- Fold your binding over towards the back easing the corners on the front to fold neatly in place.



### STEP 33

#### PHOTO VIEW FROM THE BACK

- Fold the raw edge of your binding down so that it is now double thickness with a fold on the edge of the binding.



## STEP 34

### PHOTO VIEW FROM THE BACK

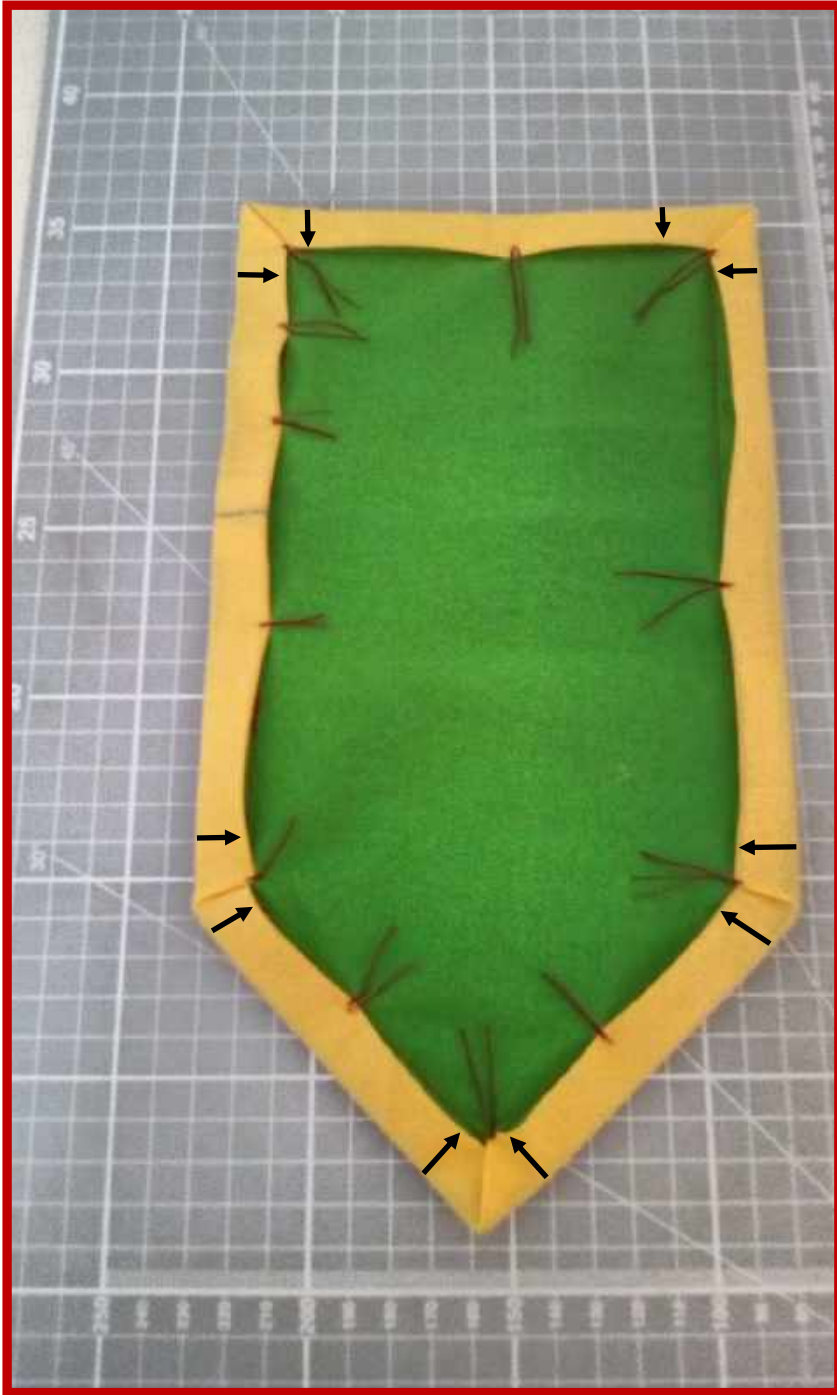
- Fold the first corner of your binding down flat to your work as shown by the black arrow. You want it to cover the stitch line created on the back of your work when you attached it to the front. It doesn't matter which corner you do first.



### STEP 35

#### PHOTO VIEW FROM THE BACK

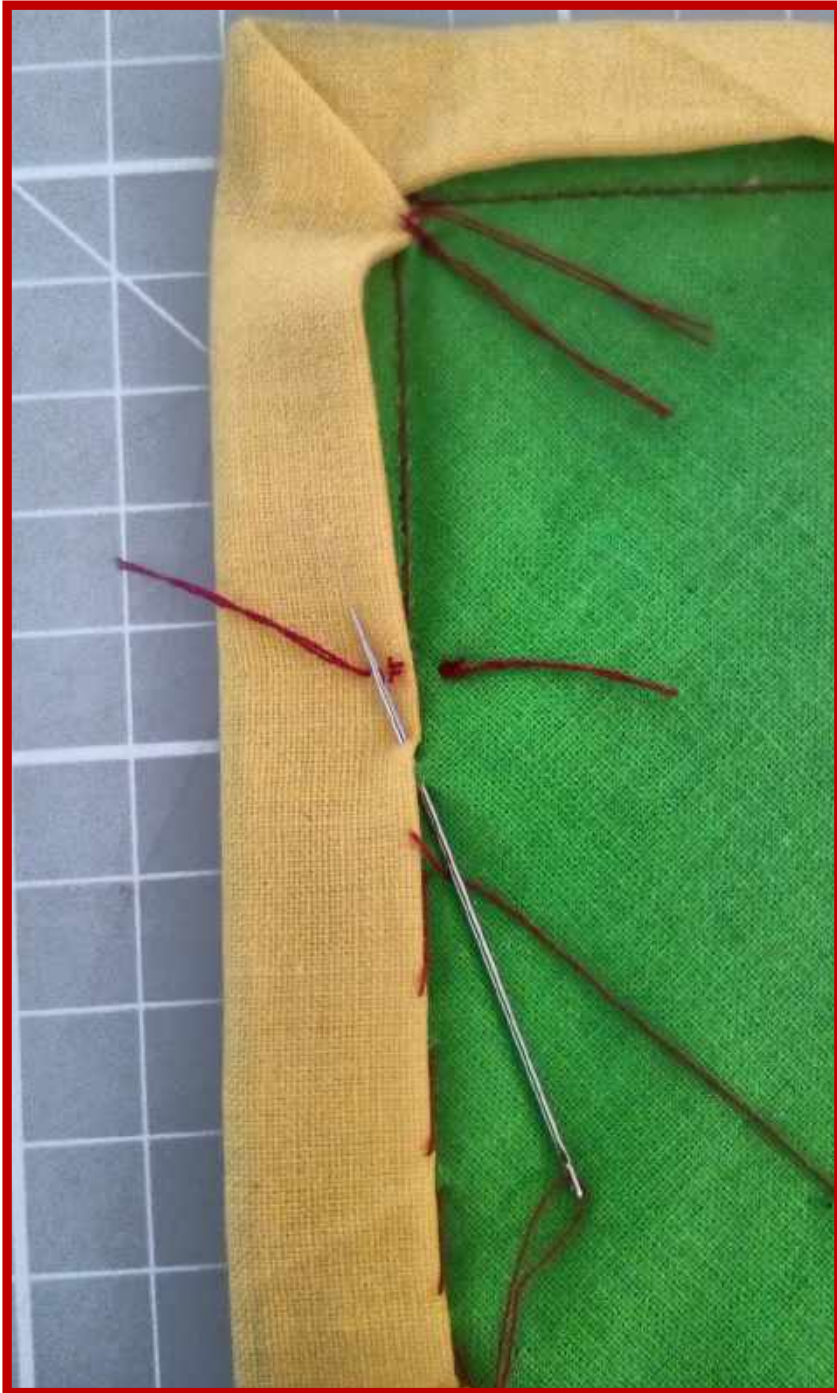
- Fold the second edge of the corner down flat to your work as shown by the black arrow, then stitch a knotless tack or use a pin or clip to hold it in place. Make sure that your binding folds over to cover the stitch line on the back of your work.



### STEP 36

#### PHOTO VIEW FROM THE BACK

- Do the same for the other corners and then place a few more tack along the edges.



### STEP 37

#### PHOTO VIEW FROM THE BACK

Although hand stitching is slower it does give a much neater and more invisible finish both sides than stitching the back down with a sewing machine.

- Using a matching thread to your binding whip stitch all the way around your binding. catching the very edge of the binding and the body of your work. I used a contrasting colour so that you can see the stitching. If you used tacks, cut through them as you advance around the edge of your work and pull the threads out.



### STEP 38

#### PHOTO VIEW FROM THE FRONT

- If you wish to sew the back binding on your sewing machine make sure that your binding covers the stitch line on the back of your work. Secure the binding in place then stitch in the ditch from the front side of your work. Stitching in the ditch means that you sew in the ditch area where the two fabrics meet as shown by the black line on the photo.
- Your binding is now finished.





### USEFUL LINKS

**TAKE ME THERE** [Kreative Kiwi Stitch Along Videos](#)

**TAKE ME THERE** [Kreative Kiwi Inspirational blog](#)

**TAKE ME THERE** [Kay's Cutz You Tube Channel](#)

**TAKE ME THERE** [How to hoop you stabilizer properly](#)

We would love to see your take on our designs so if you haven't done so already why not join Kreative Kiwi's Facebook group and post a photo of you makes with this Kreative Kiwi designs.

**TAKE ME THERE** [Kreative Kiwi's Facebook Group](#). Please answer the joining questions or your application will be rejected.

**TAKE ME THERE** [Subscribe to Kay's Cutz](#) to get notifications of new stitch along videos as they are published.